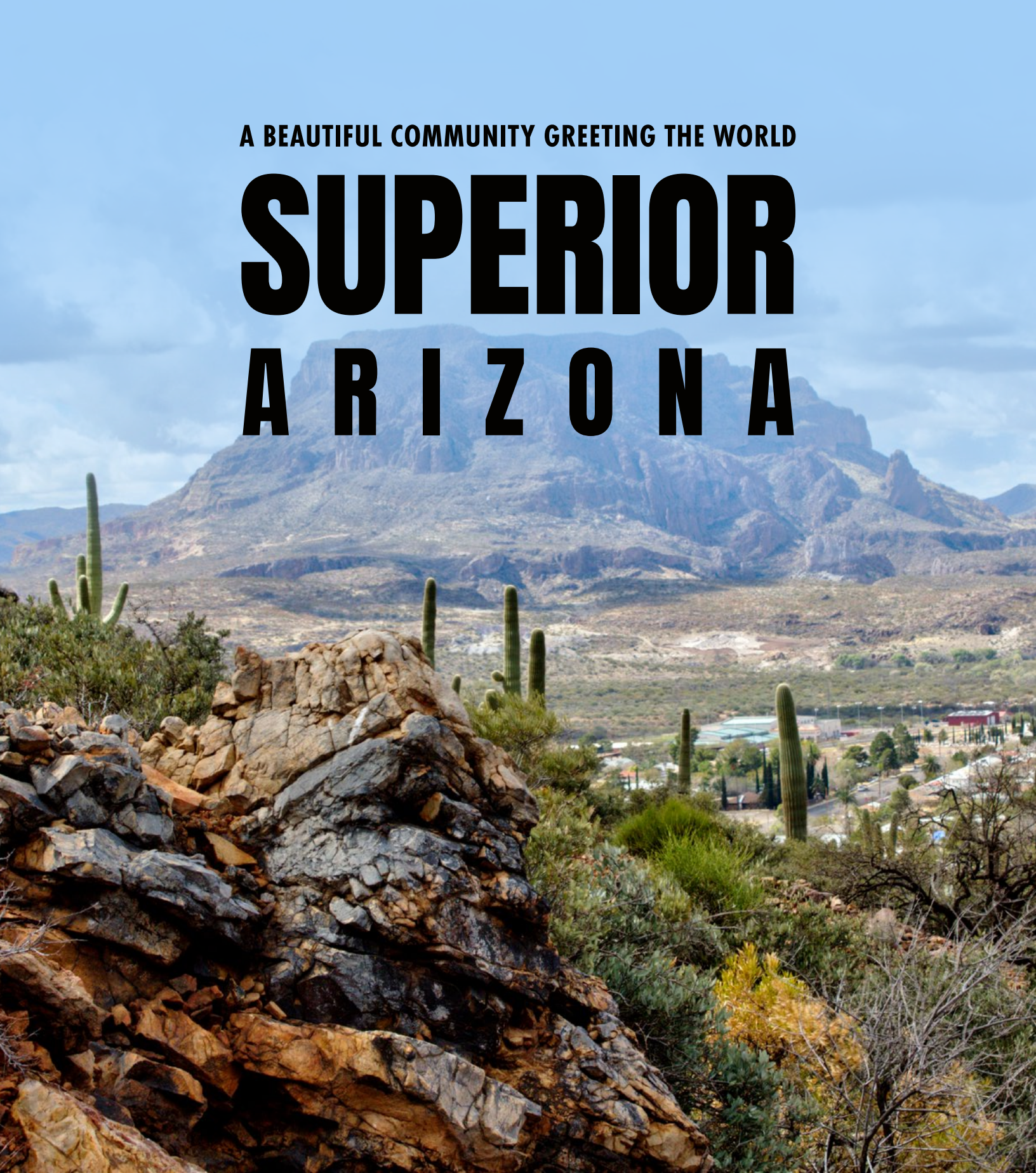


A BEAUTIFUL COMMUNITY GREETING THE WORLD

SUPERIOR ARIZONA



WWW.SUPERIORARIZONA.COM

SUPERIOR, AZ

A BEAUTIFUL CO GREETING THE V

AT A GLANCE

SUPERIOR, ARIZONA

WHAT: A small town welcoming innovation and growth

WHERE: Pinal County, Arizona

WEBSITE: www.superiorarizona.com

COMMUNITY WORLD



A FUTURE FOCUSED APPROACH TO GROWTH

Nestled in the rugged beauty of Arizona’s Copper Corridor, about 60 miles east of Phoenix, the town of Superior has long been defined by its mining heritage. Today, the community of roughly 3,000 residents is experiencing a new era, one that balances its industrial roots with innovation, tourism, sustainability, and quality of life.

“We’re very fortunate to have a town council that is completely

SUPERIOR, AZ

aligned on making sure that Superior develops a diversified economy,” Mayor Mila Besich shares. “Most of us have grown up in this area, and we know how important it is to have a lot of opportunities coming our way after what was a very dormant period before 2016.”

PLANNING FOR GROWTH

The planned acquisition of 546 acres of federal land exemplifies the current vision. Once finalized, the land will provide Superior with room to grow in ways that were previously impossible.

“That will allow us to develop our airport and advance work on our Superior Innovation Gateway Center,” says Mayor Besich. “One of the things we’re very excited about is the potential for a battery/energy storage system that connects to the Salt River Project grid. In addition, we know that this commerce and business park is ideal for R&D and testing labs and facilities for both existing and emerging technologies, including mining sustainability and advanced aerial mobility.”

The airport itself serves several specialized uses, including tourist glider flights, military, and training exercises for wildfire fighting operations. Development restrictions tied to federal land ownership have limited expansion, but the pending land transaction will unlock new opportunities. “Right now, we are in the process of developing a roadmap that will enable our airport uses to expand while also preparing sites for new, diverse business and industry,” Besich acknowledges.

“We’ve had so many people interested in coming into our airport to do aircraft repairs and different things like that, because the airport space in the Phoenix Metro is becoming more and more limited.”

Superior already has a foundation of industrial activity that supports its economy and provides employment. Companies such as Omya and Imerys operate in the area, producing mineral-based products used in industries ranging from food processing to filtration and construction.

“We have some very fine global companies here, such as Imerys and Omya, and highly value them,”



says Besich. “We are working to ensure that this new land, which is proximate to where these companies are sited, will be the location of other prominent domestic and international companies.”

INNOVATION AT THE HIVE

With an eye on long-term development, Superior is also investing in the needs of its residents. An exciting example is The HIVE, a high-tech community innovation hub located in the Superior Enterprise Center. Powered by the Institute for Digital Inclusion Acceleration and supported by Rebuild Superior, Inc.,



The HIVE provides access to technology, training, and resources for residents of all ages.

The mayor expands, “It’s two rooms, plus a podcast room and a telemedicine room, completely high tech. So, anyone from entrepreneurs to young children to senior citizens can go to The HIVE and access these technologies, tools and services.”

The space offers digital support and programming ranging from coding and robotics to 3D printing and animation, making it a space for creativity and

engagement. The local school district has even added a bus stop at the facility, making it easy for students to participate in after-school programs. “We have this wonderful state-of-the-art place, and we’re serving our residents and our young people. It’s been such a valuable asset to the community,” Besich says.

A TOURISM DESTINATION FOR LOCAL AND INTERNATIONAL VISITORS

Superior’s stunning natural surroundings and historical attractions make it a popular destination. At the heart of the town’s tourism efforts is the Boyce



MINED IN SUPERIOR. POWERING AMERICA'S FUTURE.

Resolution Copper is advancing a proposed underground copper project near Superior. We are investing in jobs, training, and community programs that support the region's long-term growth. In 2025, **we invested 4.5 million dollars in local initiatives.**



Learn more at [resolutioncopper.com](https://www.resolutioncopper.com)

RESOLUTION
C O P P E R

RESOLUTION

C O P P E R

Resolution Copper is proud to support the Town of Superior as the community is recognized again as a 2026 Best Managed Town. Superior's progress reflects the strength and resilience found throughout the Copper Corridor. As a long term partner, Resolution Copper remains committed to supporting the town's goals for economic development, workforce opportunities, and community wellbeing.

The Resolution Copper project, located 60 miles east of Phoenix, is a proposed underground mine near Superior. The ore body sits nearly 7,000 feet below the surface and is one of the world's largest untapped copper deposits. More than 2.8 billion dollars has already been invested in exploration and permitting, even before the mine has produced any copper.

The project would produce American copper for America's energy future, providing a reliable domestic supply of copper and other critical minerals essential for energy systems, national security, and modern infrastructure. At full production, Resolution Copper could supply up to one quarter of the nation's copper demand and support nearly 4,000 jobs. The project is projected to add more than \$1 billion per year to Arizona's economy, with state and local governments receiving up to \$113 million annually in tax revenue.

The project is progressing through the federal permitting process. This includes detailed environmental studies, engineering work, and ongoing engagement with communities and neighboring Native American Tribes. The Final Environmental Impact Statement (FEIS) was published in June 2025, and the project is now awaiting completion of the federal land exchange and issuance of the final Record of Decision. Resolution Copper understands the importance of responsible development and transparent dialogue as planning moves forward.

Workforce development is a major focus across Superior and the Copper Corridor. Resolution Copper supports training programs that prepare residents for skilled, high paying careers through partnerships with regional schools, community colleges, universities, and workforce organizations. These programs help students earn technical certifications, gain workplace experience, and pursue pathways into trades, engineering, and operations roles.

In 2025, Resolution Copper invested 4.5 million dollars in community and social initiatives. These investments supported education, emergency services, youth programs, small business development, and regional infrastructure planning, reflecting priorities identified with community partners.

Resolution Copper also works closely with the Town on initiatives aligned with Superior's long term goals. The Good Neighbor Agreement supports this work and outlines shared commitments to economic development, environmental stewardship, and community programs.

Across the Copper Corridor, Resolution Copper remains committed to being a responsible and engaged partner as Superior builds a strong and resilient future for the region.



Thompson Arboretum, Arizona's oldest and largest botanical garden. "The arboretum is a cornerstone," Besich portrays.

"Over the last 10 years, we annexed the park into our city limits to make sure that we can be good partners and protect this unique asset, while also promoting this major attraction in our own community, as well as across our state, nation and world." New additions to the arboretum, such as the Wallace Garden and the Hill House Airbnb, have further enhanced the experience.

Superior's outdoor recreation assets are another popular draw for residents and visitors. The Legends of Superior Trail is one example, connecting to the

Arizona Trail, an 800-mile route stretching from Mexico to Utah. "It's an incredible attraction," Besich notes. "We have about 1000 people a year who trek the entire 804 miles."

The growing outdoor recreation market is also creating new opportunities for local enterprises.

"It's been great to see some of our smaller businesses capitalizing on our outdoor recreation assets," she adds. Community events, downtown improvements, and park investments are also helping to enhance these experiences for residents and visitors alike. "This is yet another example of Superior's willingness to get the job done and make sure we're having some fun while we're doing it," she affirms.



INFRASTRUCTURE FOR THE FUTURE

Behind the scenes, Superior has been steadily upgrading critical infrastructure to support its growth. “This is testament to Superior being shovel-ready on so many projects for things that we need now and into the future,” remarks Mayor Besich. “I heartily credit our staff for having engineered the plans and working through all the systems.”

A new multimodal bridge spanning Queen Creek, a natural wash that runs through the community, represents a major opportunity for Superior. “This particular wash that our residents had to traverse connected our fire department, our school, a whole bulk of residents in our community,” Besich explains. “Their access to US 60 would be blocked when the creek experiences one of our frequent monsoonal runoff events.”



The new bridge solves that problem while also improving walkability. “We’re going to be building new sidewalks from that bridge that will connect us to our elementary school and high school, as well as to the fire station,” she continues. “That also accesses a trail, so you can very easily move around town on a bike or on your feet or on a horse, and very nicely. That is a tribute to Superior and the quality of life we like to maintain and enjoy here.”

Restoring the Queen Creek watershed and protecting local groundwater resources is another focus. This project will ensure that water flowing through the canyon remains in the ecosystem rather than disappearing into historic mining fissures, while also enhancing the natural beauty of the creek corridor.

“This is about repairing our ecosystem, repairing the aquifer, but most importantly, this is going to be a nice, beautiful natural attraction to our community,” Besich conveys. “Everybody loves when the Creek flows.”

ADDRESSING HOUSING, INFRASTRUCTURE, AND WORKFORCE NEEDS

Like communities across America, Superior is finding solutions to housing challenges. “We have some unique situations, because we haven’t had a lot of extra land to grow and expand, and housing costs have continued to rise across the nation,” Besich acknowledges. “We’ve been examining best practices and workable solutions in a very methodical way, so that more housing can be built in our town.”

Statewide water regulations have impacted new development in certain areas of Arizona, but the town is working with partners, including Arizona Water Company, to ensure Superior’s water policies continue to support responsible growth. “We’re proud of the relationship that we have with Arizona Water Company and what we’re working for to ensure that we continue to protect our town’s available water supply as well as assuring sufficient supply for future growth,” she says.

“We are also working with our partners at Resolution Copper and ensuring that infrastructure is paid for and funded to bring additional water that would assure our water supply comes from sustainable surface sources.”

Workforce development is another priority. Through the Superior Enterprise Center, the town is collaborating with Central Arizona College and other educational partners to prepare residents for careers in mining, hospitality, horticulture, and other local industries. “We are intently focused on developing the workforce that is needed to meet the skill and talent demands of our existing companies as well



Advancing the future of energy in Arizona, together



As Arizona's economy accelerates, so does the state's need for dependable, future ready electricity.

AES in Arizona



AES is your partner for delivering safe, reliable, and affordable energy solutions for Arizona.

For over 15 years, we have been working with our partners, customers, and communities to deliver solutions that meet Arizona's growing energy needs, while creating long-lasting benefits for the people who live and work here. Our wind, solar, and battery projects provide abundant, affordable power to Arizona customers like SRP and APS, strengthening the reliability of the local grid.

60+
projects

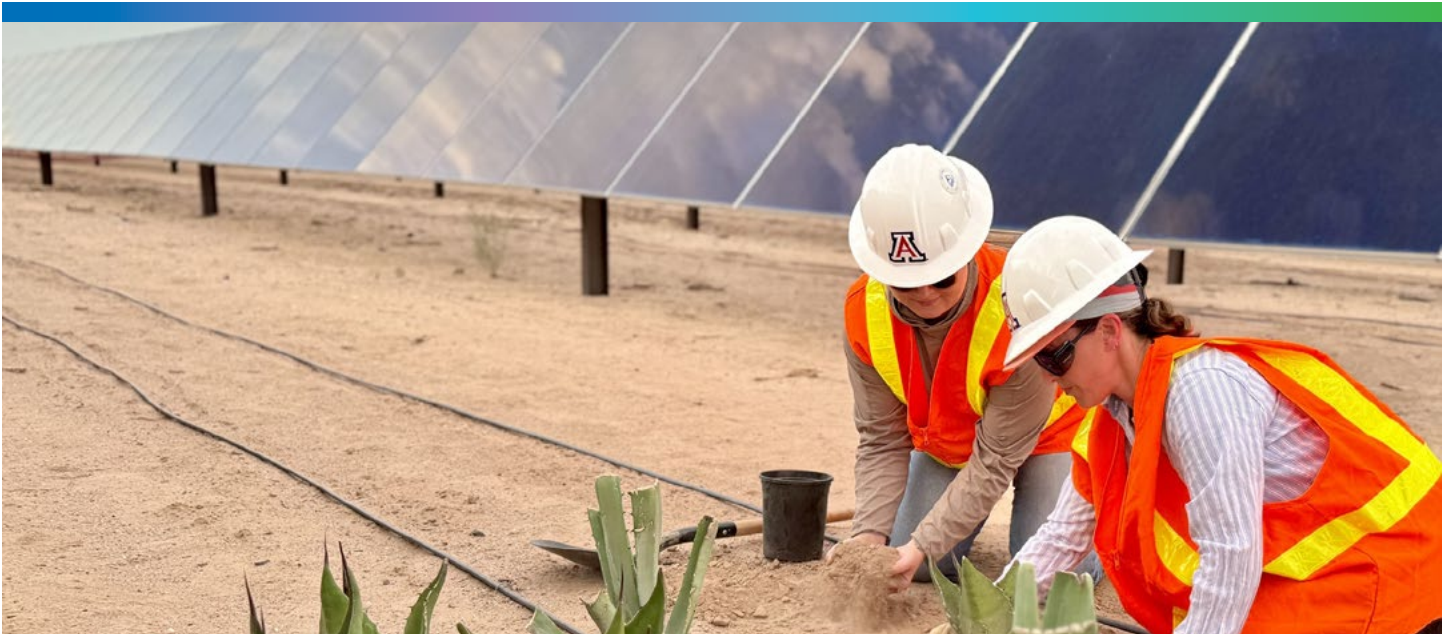
2+GW
in operation

\$ Millions
in local property tax and
land payments every year

2,000+
jobs created

\$430,000+
social impact donations





At AES, we understand that our success as a company is only as strong as our partnerships with the communities where we operate. Working together with local organizations, government agencies, nonprofits, unions, and community leaders, we co-develop social impact programs that align with local priorities and advance stronger, more resilient communities for generations to come. In fact, we're piloting a new grant program in Arizona focused on collaborating with non-profit organizations committed to enhancing community resilience and climate adaptation.

From sponsoring the Boyce Thompson Arboretum's Green Gala to being part of local events like the Superior Mining Festival, AES is committed to being a good neighbor in Superior.

Meet our team:



Kellie Pitera
Arizona Market
Development Director



Claire O'Donnell
Project Developer



Holly Keifer
Community Relations



About AES

Founded in 1981 and proudly headquartered in Arlington, Virginia, The AES Corporation (AES) is a Fortune 500 global energy company and leading renewable energy developer, delivering innovative and impactful solutions that are tailored to meet the energy needs of our customers and communities today and in the future.

Email: superiorbess@aes.com
Phone: (928) 404-1630
Web: aes.com/arizona





as those that will be locating here in the future.” Besich relays.

For the very near-term, sectors such as tourism and horticulture are opening up significant career paths.

“The jobs of the arboretum are long-term, steady jobs, and pay well,” says Besich.

As the town prepares the Superior Innovation Gateway business and commerce park by its airport, the Superior Enterprise Center, Town Government and other training and education partners will

collaborate to ensure that the pipeline of workers these companies will need are well- prepared for the jobs that they create.

Companies such as Imerys and Omya – both global companies - are directly benefiting from these initiatives.

“The Imerys perlite mine located in Superior relies heavily on access to a sustained and skilled talent pool, which the community and nearby Phoenix Metro Area readily provide,” Drew Duncan, Plant and Mine Manager, Imerys Perlite USA, INC, relays.

BOYCE THOMPSON ARBORETUM



BOYCE THOMPSON
ARBORETUM®



DISCOVER THE DESERTS OF THE WORLD

at Boyce Thompson Arboretum. For over a century, the Arboretum has inspired appreciation and stewardship of desert plants, wildlife, and ecosystems through education, research, and conservation.

Explore over 20,000 plants surrounded by breathtaking Arizona landscapes — and add Boyce Thompson Arboretum to your must-visit travel list.

PLAN YOUR VISIT

btarboretum.org

(520) 689-2723

37615 E Arboretum Way
Superior, AZ 85173



“Additionally, the Town’s business-friendly environment is a major contributor to Imerys’ continued success and production output of our Superior operations. This facility plays a significant role in supplying high-quality minerals to such key industries as construction, filtration, agriculture, and manufacturing.”

For Omya, Corey Van Rensburg, Plant Manager of Omya Arizona, Superior provides the business climate and infrastructure that are integral to its operations. “Omya’s facility in Superior produces high-quality calcium carbonate products, including materials used in food-grade applications. The operation plays an important role in supplying essential mineral ingredients to industries across the Americas while maintaining rigorous quality and safety standards.

He adds, “A key strength of Omya Superior is its people. The majority of Omya employees at this location live in the Superior community or surrounding areas, bringing experience and a strong local connection to their work every day. Omya’s partnership with the Town of Superior is also central to the facility’s success. Reliable utilities, wastewater treatment infrastructure, and responsive emergency services

provide the essential support needed to operate a modern production facility safely and efficiently.”

From a community standpoint, Rensburg shares that “beyond day-to-day operations, Omya values its role as a member of the Superior community. The company supports and participates in local events and initiatives throughout the year, reinforcing its commitment to the town and the people who call Superior home. Through these connections, Omya continues to invest not only in its operations, but also in the long-term vitality of the community.”

Without question, mining will continue to play an important role in Superior and the entire Arizona Copper Corridor, as this region contains several world-class mines, including the development of the Resolution Copper project.

A STRONG FOUNDATION

As these projects move forward, efforts are focused on fiscal responsibility and clear communication. “Our number one principal and practice is to make sure that we offer transparent government, that we speak to our residents, that they understand what’s going on,” Besich emphasizes. “Number two is that

SUPERIOR

ARIZONA

Your Experience Elevated in ψ Superior, Arizona

Discover Superior — a place to live, work, play, learn, and do business surrounded by majestic desert landscapes. Savor local flavors, wander vibrant streets, meet welcoming locals, and make memories unlike anywhere else.

MORNING: FUEL UP & HIKE

Grab breakfast at Gypsy Sisters or Mountainside Coffee, then hit the Legends of Superior Trails at Picketpost Mountain for breathtaking views.

MIDDAY: NATURE & OFF-ROADING

Stroll Boyce Thompson Arboretum or rev up with Superior UTV Rentals for an off-road adventure.

AFTERNOON: STROLL & SAVOR

Go on a birding adventure in Arnett Canyon or wander historic downtown for shops and murals. Delight in a tasty lunch at Bellas Cafe on Main Street.

EVENING: SUNSET MAGIC & DINNER

Catch a stunning Superior sunset, partake in Arizona wine at Bruzzi Vineyard, then settle in for drinks and a meal at a downtown favorite such as Porter's Saloon & Grill or Silver King Smokehouse & Saloon.



Your day in Superior is waiting - start planning now!

VISIT US AT [SuperiorArizona.com](https://www.SuperiorArizona.com)

Find us on social [f](#) [i](#) [@visitsuperior](#)



Downtown Superior



Picketpost Mountain



Boyce Thompson Arboretum



Legends of Superior Trails



World Class Birding



Superior UTV Rentals

SUPERIOR, AZ

we maintain a strong financial house. We are very pleased that we are on year eight with clean audits and fiscal health. For a small town, that is a huge accomplishment, and I am very proud of our staff.”

For Town Manager Todd Pryor, Superior’s infrastructure investments are laying the groundwork for the next phase of development. “We are working to keep our financial house in order,” Pryor says. “We’re also nearing completion of some major projects, including the rebuilding of our wastewater treatment plant.” He points to recent improvements, including street resurfacing, new sidewalks, and the completion of the Queen Creek bridge.

“We are getting ready for the next large tranche of infrastructure projects that will have to happen around the land exchange,” Pryor highlights. “We need hydrants, we need roads, we need power, we need sewer. All of those things are going to have to be developed, and that’ll be our next big lift. We are more than ready for this challenge.”





PREFERRED VENDOR/PARTNER

■ Resolution Copper

www.resolutioncopper.com

Resolution Copper is Arizona copper. The proposed project near Superior is operated by Resolution Copper Mining LLC, owned 55 percent by Rio Tinto and 45 percent by BHP. The company is working with communities and tribal partners as the project advances through the federal permitting process.

■ AES Corporation

www.aes.com/arizona

Founded in 1981 and proudly headquartered in Arlington, Virginia, The AES Corporation (AES) is a Fortune 500 global energy company and leading renewable energy developer, delivering innovative and impactful solutions that are tailored to meet the energy needs of our customers and communities today and in the future.

■ Boyce Thompson Arboretum

www.btarboretum.org

Discover the deserts of the world at Boyce Thompson Arboretum. For over a century, the Arboretum has inspired appreciation and stewardship of desert plants, wildlife, and ecosystems through education, research, and conservation. Explore over 20,000 plants surrounded by breathtaking Arizona landscapes – and add Boyce Thompson Arboretum to your must-visit travel list.

■ Town of Superior

www.superiorarizona.com

Superior, Arizona is a vibrant destination to live, work, play, learn, and do business. Surrounded by majestic desert landscapes, Superior is a warm and welcoming community, with all of the charm one hopes for in a small town, including rich arts and culture, festivals, outdoor adventure, an epicure's dining scene as well as a rapidly emerging entrepreneurial economy. From Boyce Thompson Arboretum to historic downtown, every experience here is elevated.



Superior AZ

AS FEATURED IN **BUSINESS VIEW MAGAZINE**